



Niban like protein1 (Ab-712) Antibody

#21332

Catalog Number: 21332-1, 21332-2

Amount: 50µg/50µl, 100µg/100µl

Swiss-Prot No. : Q96TA1

Form of Antibody: Rabbit IgG in phosphate buffered saline (without Mg²⁺ and Ca²⁺), pH 7.4, 150mM NaCl, 0.02% sodium azide and 50% glycerol.

Storage/Stability: Store at -20°C/1 year

Immunogen: The antiserum was produced against synthesized non-phosphopeptide derived from human niban like protein 1 around the phosphorylation site of serine 712 (Q-V-S-SP-P).

Purification: The antibody was affinity-purified from rabbit antiserum by affinity-chromatography using epitope-specific immunogen

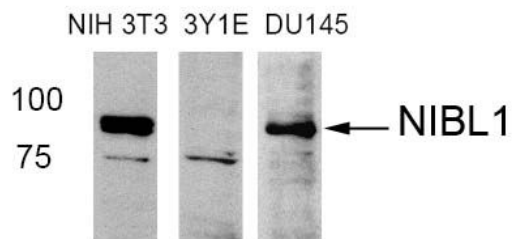
Specificity/Sensitivity: Niban like protein 1 (Ab-712) antibody detects endogenous levels of total niban like protein1

Reactivity: Human, Mouse

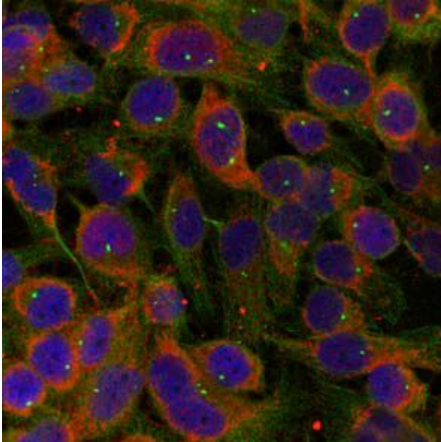
Applications:

Predicted MW: 82kd

WB: 1:500~1:1000 IF: 1:50~1:100



Western blot analysis of extract from NIH3T3 (Mouse),
3Y1E (Rat), DU145 (Human) cells using Niban like protein
.1(Ab-712) antibody (#21332).



Immunofluorescence staining of methanol-fixed HeLa cells
using Niban like protein 1(Ab-712) antibody (#21332, Red).

Background :

a maternal imprinting gene. May possess growth suppressor activity. Two major alternatively spliced isoforms have been described. forms. One form, Meg3-proximal (Meg3p), contains exons 1-3. The second form, Meg3-distal (Meg3d) did not contain exons 1-3 and was present in oocytes and in 1- and 2-cell embryos

References:

Adachi H, Majima S, et al. Oncogene. 2004 Apr 22;23(19):3495-500
Matsumoto F, Fujii H, et al. Hum Pathol. 2006 Dec; 37(12):1592-600.