



## LC3A/Apg-8 Antibody

#21402

**Catalog Number:** 21402-1, 21402-2

**Amount:** 50µg/50µl, 100µg/100µl

**Swiss-Prot No. :** Q9H492

**Form of Antibody:** Rabbit IgG in phosphate buffered saline (without Mg<sup>2+</sup> and Ca<sup>2+</sup>), pH 7.4, 150mM NaCl, 0.02% sodium azide and 50% glycerol.

**Storage/Stability:** Store at -20°C/1 year

**Immunogen:** The antiserum was produced against synthesized non-phosphopeptide derived from human human LC3A protein ("MPSDRPFKQRRSFA").

**Purification:** The antibody was affinity-purified from rabbit antiserum by affinity-chromatography using epitope-specific immunogen

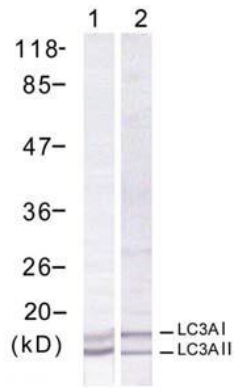
**Specificity/Sensitivity:** LC3A antibody detects endogenous levels of total LC3A protein

**Reactivity:** Human, Mouse, Rat

### Applications:

Predicted MW: 18 16kd

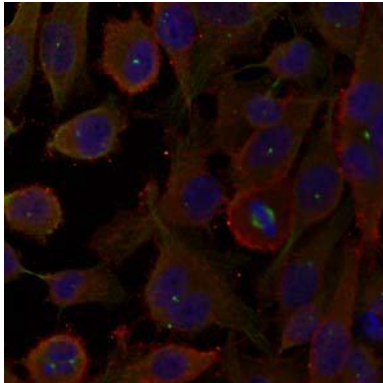
WB: 1:500~1:1000 IF: 1:100~1:200



Serum Starvation - +

Western blot analysis of extract from human HeLa cells

using LC3A/Apg-8 antibody (#21402).



Immunofluorescence staining of methanol-fixed HeLa cells

using LC3A /Apg-8 antibody (#21402, Red).

### Background :

Probably involved in formation of autophagosomal vacuoles (autophagosomes).

### References:

Hammarback JA, et al. Neuron 7(1):129-39, 1991.

He H, et al. J. Biol Chem 278(31):29278-87, 2003.