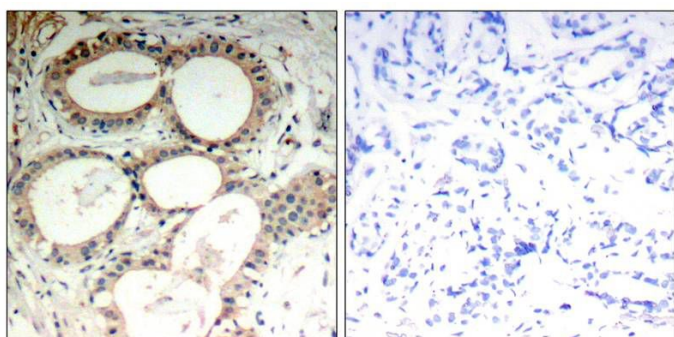
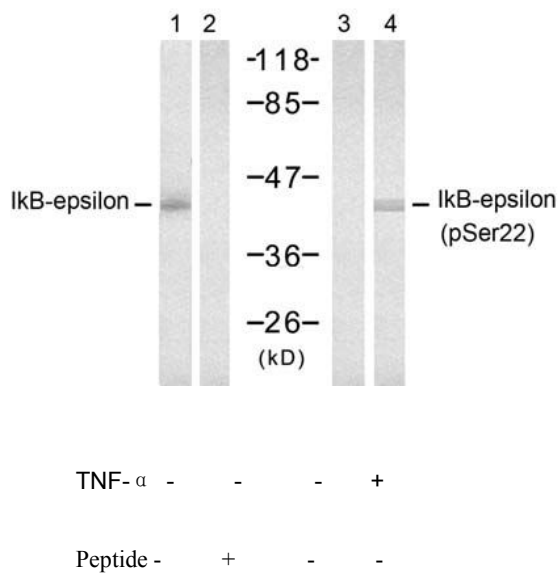


#21296



Immunohistochemical analysis of paraffin-embedded human breast carcinoma tissue using I κ B- ϵ (Ab-22) antibody (#21296).



Western blot analysis of extract from 293 cells, untreated or treated with TNF- α (20ng/ml, 15min), using I κ B- ϵ (Ab-22) antibody (#21296, Lane 1 and 2) and I κ B- ϵ (Phospho-Ser22) antibody (#11213, Lane 3 and 4).

Background :

Inhibits NF-kappa-B by complexing with and trapping it in the cytoplasm. Inhibits DNA-binding of NF-kappa-B p50-p65 and p50-c-Rel complexes

References:

- Shirane M, et al. (1999) J Biol Chem; 274(40): 28169-74
- Karin, M. and Ben-Neriah, Y. (2000) Annu. Rev. Immunol. ;18, 621-663.
- Chen, Z.J. et al. (1996) Cell; 84, 853-862.
- Brown, K. et al. (1995) Science; 267, 1485-1488.