



## HSP27 (Phospho-Ser82) Antibody

#11248

**Catalog Number:** 11248-1, 11248-2

**Amount:** 50µg/50µl, 100µg/100µl

**Swiss-Prot No. :** P04792

**Form of Antibody:** Rabbit IgG in phosphate buffered saline (without Mg<sup>2+</sup> and Ca<sup>2+</sup>), pH 7.4, 150mM NaCl, 0.02% sodium azide and 50% glycerol.

**Storage/Stability:** Store at -20°C/1 year

**Immunogen:** The antiserum was produced against synthesized phosphopeptide derived from human HSP27 around the phosphorylation site of serine 82 (Q-L-S<sup>P</sup>-S-G).

**Purification:** The antibody was affinity-purified from rabbit antiserum by affinity-chromatography using epitope-specific phosphopeptide. The antibody against non-phosphopeptide was removed by chromatography using non-phosphopeptide corresponding to the phosphorylation site.

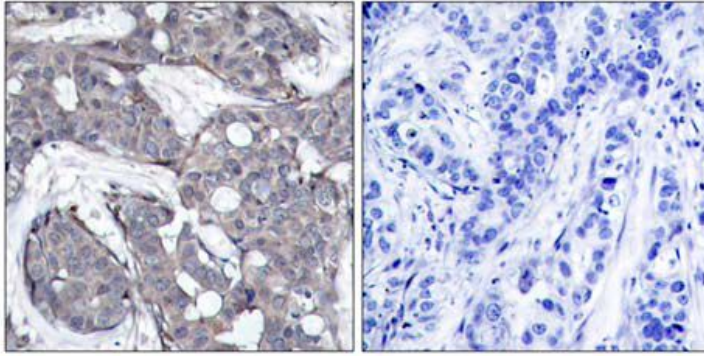
**Specificity/Sensitivity:** HSP27 (phospho-Ser82 antibody detects endogenous levels of HSP27 only when phosphorylated at serine 82.

**Reactivity:** Human,

### Applications:

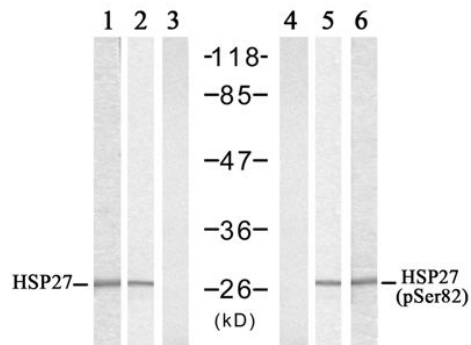
Predicted MW: 27kd

WB: 1:500~1:1000 IHC: 1:50~1:100



P-Peptide - +

Immunohistochemical analysis of paraffin-embedded human breast carcinoma tissue using HSP27(phospho-Ser82) antibody (#11248).



Heat Shock	+	+		-	-	+
Peptide	-	+				
UV		+		-	+	

Western blot analysis of extracts from HeLa cells untreated or treated with Heat Shock or UV, using HSP27 (Ab-82) antibody (#21240, Lane 1, 2 and 3) and HSP27 (Phospho-Ser82) antibody (#11248, Lane 4, 5 and 6).

**Background :**

Involved in stress resistance and actin organization

**References:**

White MY, et al. (2006) *J Mol Cell Cardiol.* 40(6): 761-74  
Xiankui Sun, et al. (2006) *Cell Stress Chaperones.* 11(1): 61–70  
Matthias Meier; et al. (2001) *Hypertension.* 38:1260  
Ali Dana, et al. (2000) *Circulation Research.* 86: 989