



GSK3 α (Phospho-Ser21) Antibody

#11007

Catalog Number: 11007-1, 11007-2

Amount: 50 μ g/50 μ l, 100 μ g/100 μ l

Swiss-Prot No. : P49840

Form of Antibody: Rabbit IgG in phosphate buffered saline (without Mg²⁺ and Ca²⁺), pH 7.4, 150mM NaCl, 0.02% sodium azide and 50% glycerol.

Storage/Stability: Store at -20°C/1 year

Immunogen: The antiserum was produced against synthesized phosphopeptide derived from human GSK3 α around the phosphorylation site of serine 21 (T-S-SP-F-A).

Purification: The antibody was affinity-purified from rabbit antiserum by affinity-chromatography using epitope-specific phosphopeptide. The antibody against non-phosphopeptide was removed by chromatography using non-phosphopeptide corresponding to the phosphorylation site.

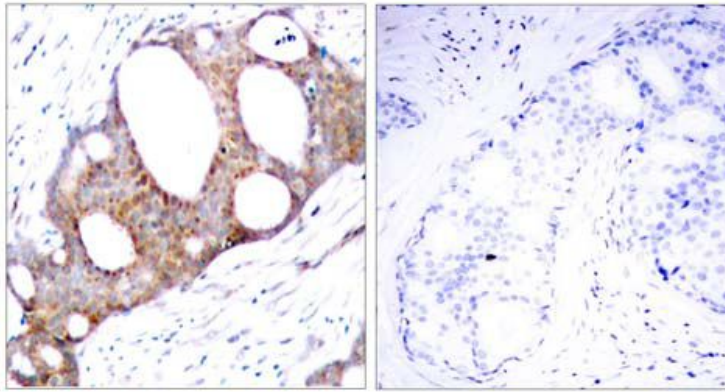
Specificity/Sensitivity: GSK3 α (phospho-Ser21) antibody detects endogenous levels of GSK3 α only when phosphorylated at serine 21 and does not detect GSK-3 β when phosphorylated at Ser9

Reactivity: Human, Mouse, Rat

Applications:

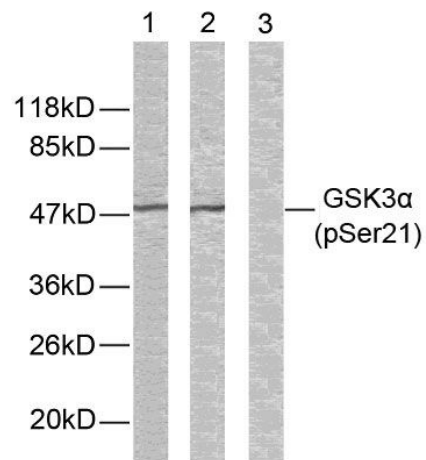
Predicted MW: 51kd

WB: 1:500~1:1000 IHC: 1:50~1:100 IF:1:100~1:200



P-Peptide	-	+
-----------	---	---

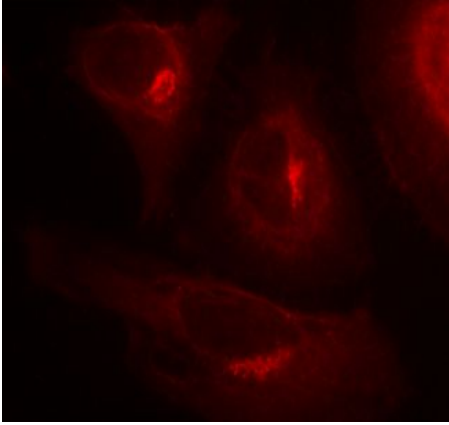
. Immunohistochemical analysis of paraffin-embedded human breast carcinoma tissue using GSK3 α (phospho-Ser21) antibody (#11007) .



Peptide	-	+	-
1	0.00	0.00	0.00
2	0.00	0.00	0.00
3	0.00	0.00	0.00
4	0.00	0.00	0.00
5	0.00	0.00	0.00
6	0.00	0.00	0.00
7	0.00	0.00	0.00
8	0.00	0.00	0.00
9	0.00	0.00	0.00
10	0.00	0.00	0.00
11	0.00	0.00	0.00
12	0.00	0.00	0.00
13	0.00	0.00	0.00
14	0.00	0.00	0.00
15	0.00	0.00	0.00
16	0.00	0.00	0.00
17	0.00	0.00	0.00
18	0.00	0.00	0.00
19	0.00	0.00	0.00
20	0.00	0.00	0.00
21	0.00	0.00	0.00
22	0.00	0.00	0.00
23	0.00	0.00	0.00
24	0.00	0.00	0.00
25	0.00	0.00	0.00
26	0.00	0.00	0.00
27	0.00	0.00	0.00
28	0.00	0.00	0.00
29	0.00	0.00	0.00
30	0.00	0.00	0.00
31	0.00	0.00	0.00
32	0.00	0.00	0.00
33	0.00	0.00	0.00
34	0.00	0.00	0.00
35	0.00	0.00	0.00
36	0.00	0.00	0.00
37	0.00	0.00	0.00
38	0.00	0.00	0.00
39	0.00	0.00	0.00
40	0.00	0.00	0.00
41	0.00	0.00	0.00
42	0.00	0.00	0.00
43	0.00	0.00	0.00
44	0.00	0.00	0.00
45	0.00	0.00	0.00
46	0.00	0.00	0.00
47	0.00	0.00	0.00
48	0.00	0.00	0.00
49	0.00	0.00	0.00
50	0.00	0.00	0.00
51	0.00	0.00	0.00
52	0.00	0.00	0.00
53	0.00	0.00	0.00
54	0.00	0.00	0.00
55	0.00	0.00	0.00
56	0.00	0.00	0.00
57	0.00	0.00	0.00
58	0.00	0.00	0.00
59	0.00	0.00	0.00
60	0.00	0.00	0.00
61	0.00	0.00	0.00
62	0.00	0.00	0.00
63	0.00	0.00	0.00
64	0.00	0.00	0.00
65	0.00	0.00	0.00
66	0.00	0.00	0.00
67	0.00	0.00	0.00
68	0.00	0.00	0.00
69	0.00	0.00	0.00
70	0.00	0.00	0.00
71	0.00	0.00	0.00
72	0.00	0.00	0.00
73	0.00	0.00	0.00
74	0.00	0.00	0.00
75	0.00	0.00	0.00
76	0.00	0.00	0.00
77	0.00	0.00	0.00
78	0.00	0.00	0.00
79	0.00	0.00	0.00
80	0.00	0.00	0.00
81	0.00	0.00	0.00
82	0.00	0.00	0.00
83	0.00	0.00	0.00
84	0.00	0.00	0.00
85	0.00	0.00	0.00
86	0.00	0.00	0.00
87	0.00	0.00	0.00
88	0.00	0.00	0.00
89	0.00	0.00	0.00
90	0.00	0.00	0.00
9			

P-Peptide - - +

Western blot analysis of extracts from ovary cancer cells using GSK3 α (phospho-Ser21) antibody (#11007).



Immunofluorescence staining of methanol-fixed HeLa cells showing cytoplasmic staining using GSK3 α (phospho-Ser21) antibody (#11007).

Background :

Implicated in the hormonal control of several regulatory proteins including glycogen synthase, MYB and the transcription factor JUN

References:

- Barry FA, et al. (2003) FEBS Lett. 553(1-2): 173-178.
Koivisto L, et al. (2003) J Cell Sci. 116(Pt 18): 3749-3760.
Welsh G I, et al. (1996) Trends Cell Biol. 6:274-279.
Srivastava A K, et al. (1998) Mol. Cell. Biochem. 182: 135-141.
Cross D A, et al. (1995) Nature. 378: 785-789.