



## CDK6 (Ab-24) Antibody

#21543

**Catalog Number:** 21543-1, 21543-2

**Amount:** 50  $\mu$ g/50  $\mu$ l, 100  $\mu$ g/100  $\mu$ l

**Swiss-Prot No. :** Q00534

**Form of Antibody:** Rabbit IgG in phosphate buffered saline (without  $Mg^{2+}$  and  $Ca^{2+}$ ), pH 7.4, 150mM NaCl, 0.02% sodium azide and 50% glycerol.

**Storage/Stability:** Store at  $-20^{\circ}C$ /1 year

**Immunogen:** The antiserum was produced against synthesized non-phosphopeptide derived from human CDK6 around the phosphorylation site of tyrosine 24 (G-A-Y<sub>P</sub>-G-K).

**Purification:** The antibody was affinity-purified from rabbit antiserum by affinity-chromatography using epitope-specific immunogen

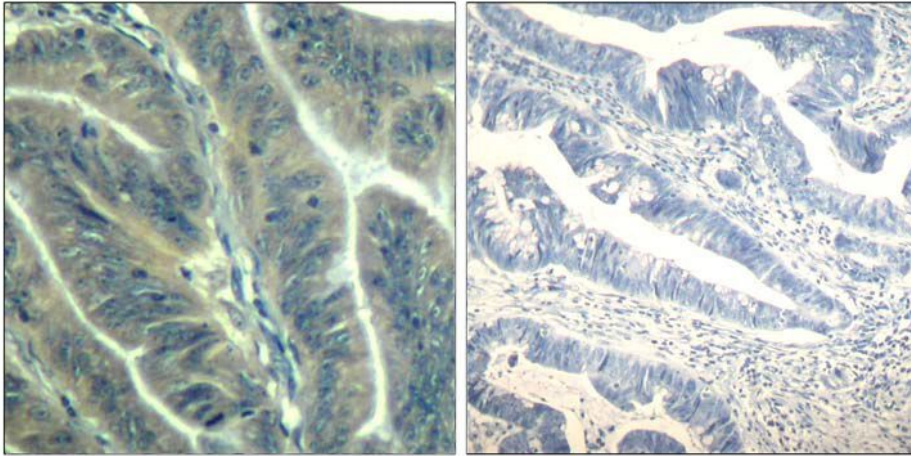
**Specificity/Sensitivity:** CDK6 (Ab-24) antibody detects endogenous levels of total CDK6 protein

**Reactivity:** Human, Mouse,

### Applications:

Predicted MW: 70,85kd

IHC: 1:50~1:100



Peptide - +

Immunohistochemical analysis of paraffin-embedded human colon carcinoma tissue using CDK6 (Ab-24) Antibody (#21543).

### **Background :**

Phosphorylates specifically ribosomal protein S6 in response to insulin or several classes of mitogens. Promotes protein synthesis by phosphorylating PDCD4 at 'Ser-67' and targeting it for degradation.

### **References:**

- Flores-Rozas, H. et al. (1994) *Proc. Natl. Acad. Sci. USA* 91, 8655-8659.  
Pestell, R.G. et al. (1999) *Endocr. Rev.* 20, 501-534.  
Lukas, J. et al. (1996) *Mol. Cell. Biol.* 16, 6917-1625.