



CDK6 (Ab-13) Antibody

#21542

Catalog Number: 21542-1, 21542-2

Amount: 50 μ g/50 μ l, 100 μ g/100 μ l

Swiss-Prot No. : Q00534

Form of Antibody: Rabbit IgG in phosphate buffered saline (without Mg^{2+} and Ca^{2+}), pH 7.4, 150mM NaCl, 0.02% sodium azide and 50% glycerol.

Storage/Stability: Store at $-20^{\circ}C$ /1 year

Immunogen: The antiserum was produced against synthesized non-phosphopeptide derived from human CDK6 around the phosphorylation site of tyrosine 13 (Q-Q-Y_P-E-C).

Purification: The antibody was affinity-purified from rabbit antiserum by affinity-chromatography using epitope-specific immunogen

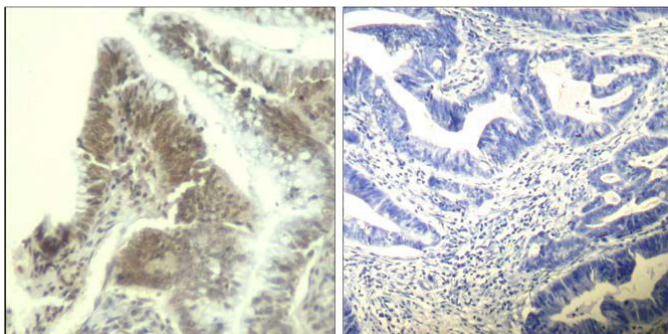
Specificity/Sensitivity: CDK6 (Ab-13) antibody detects endogenous levels of total CDK6 protein

Reactivity: Human, Mouse,

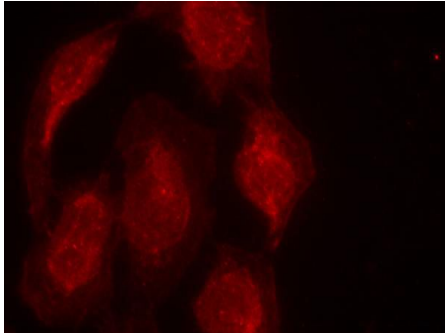
Applications:

Predicted MW: 70,85kd

IHC: 1:50~1:100 IF:1:100~1:200



Peptide - +
Immunohistochemical analysis of paraffin-embedded human colon carcinoma tissue using CDK6 (Ab-13) Antibody (#21542).



Immunofluorescence staining of methanol-fixed HeLa cells using CDK6 (Ab-13) Antibody (#21542, Red).

Background :

Phosphorylates specifically ribosomal protein S6 in response to insulin or several classes of mitogens.
Promotes protein synthesis by phosphorylating PDCD4 at 'Ser-67' and targeting it for degradation.

References:

- Flores-Rozas, H. et al. (1994) *Proc. Natl. Acad. Sci. USA* 91, 8655-8659.
Pestell, R.G. et al. (1999) *Endocr. Rev.* 20, 501-534.
Lukas, J. et al. (1996) *Mol. Cell. Biol.* 16, 6917-1625.