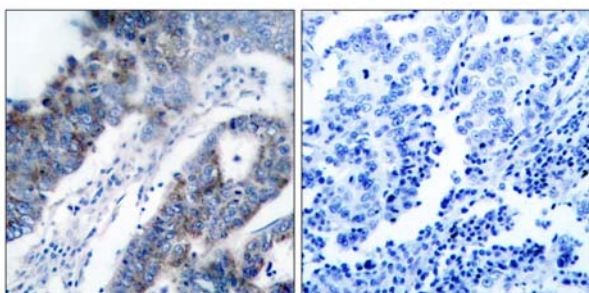


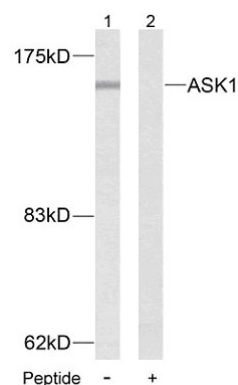
ASK1 (Ab-83) Antibody

- Catalog Number:** 21125-1, 21125-2
- Amount:** 50µg/50µl, 100µg/100µl
- Form of Antibody:** Rabbit IgG in phosphate buffered saline (without Mg²⁺ and Ca²⁺), pH 7.4, 150mM NaCl, 0.02% sodium azide and 50% glycerol.
- Storage/Stability:** Store at -20°C/1 year
- Immunogen:** The antiserum was produced against synthesized non-phosphopeptide derived from human ASK1 around the phosphorylation site of serine 83 (G-S^P-V-G).
- Purification:** The antibody was affinity-purified from rabbit antiserum by affinity-chromatography using epitope-specific immunogen.
- Specificity/Sensitivity:** ASK1 (Ab-83) antibody detects endogenous levels of ASK1 protein around serine 83.
- Reactivity:** Human
- Applications:** WB: 1:500~1:1000 IHC: 1:50~1:100 IF: 1:100~1:200
- Swiss-Prot No. :** Q99683
- References:** Mabuchi S, et al. (2004) Endocrinology. 145(1): 49-58.
Yuan ZQ, et al. (2003) J Biol Chem. 278(26): 23432-23440.
Kim AH, et al. (2001) Mol Cell Biol. 21(3): 893-901.

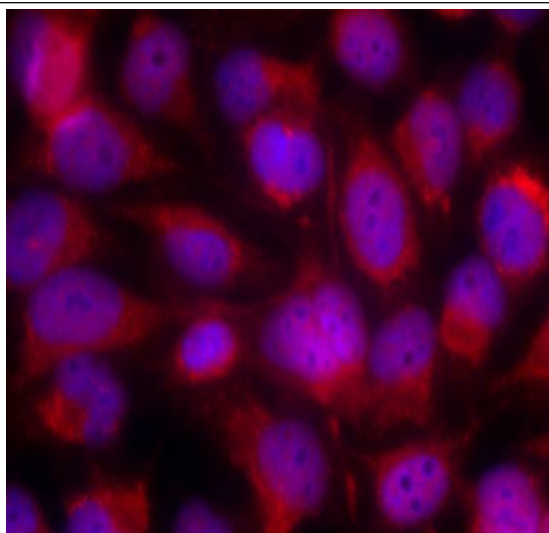


Peptide - +

Immunohistochemical analysis of paraffin- embedded human breast carcinoma tissue, using ASK1 (Ab-83) antibody (#21125).



Western blot analysis of extract from MDA-MB- 435 cells, using ASK1 (Ab-83) antibody (#21125).



Immunofluorescence staining of methanol-fixed HeLa cells using ASK1 (Ab-83) antibody (#21125, Red).