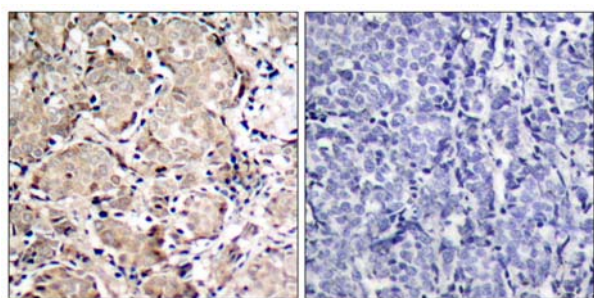


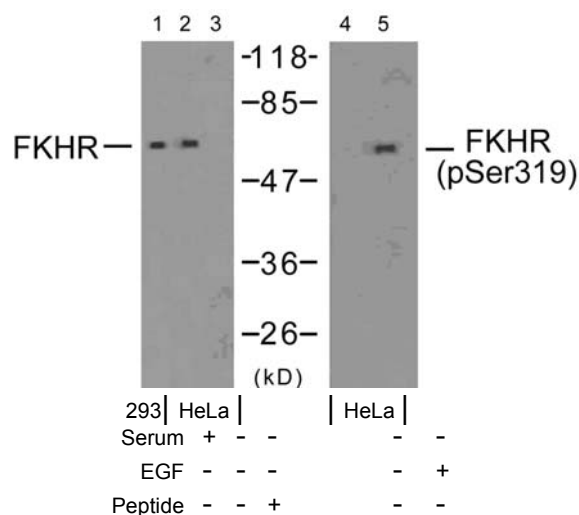
FKHR (Phospho-Ser319) Antibody

- Catalog Number:** 11136-1, 11136-2,
Amount: 50µg/50µl, 100µg/100µl,
Swiss-Prot No. : Q12778
All Names: FKHR, FOXO1, Forkhead box protein O1A, Forkhead in rhabdomyosarcoma
All Sites: Human: Ser319; Mouse: Ser316; Rat: Ser313
Form of Antibody: Rabbit IgG in phosphate buffered saline (without Mg²⁺ and Ca²⁺), pH 7.4, 150mM NaCl, 0.02% sodium azide and 50% glycerol.
Storage/Stability: Store at -20°C/1 year
Immunogen: The antiserum was produced against synthesized phosphopeptide derived from human FKHR around the phosphorylation site of serine 319 (T-S-S^P-N-A).
Purification: The antibody was affinity-purified from rabbit antiserum by affinity-chromatography using epitope-specific phosphopeptide. The antibody against non-phosphopeptide was removed by chromatography using non-phosphopeptide corresponding to the phosphorylation site.
Specificity/Sensitivity: FKHR (phospho-Ser319) antibody detects endogenous levels of FKHR only when phosphorylated at serine 319.
Reactivity: Human, Mouse, Rat
Applications: WB: 1:500~1:1000 IHC: 1:50~1:100 IF:1:100~1:200
References: Rena G, et al. (2002) EMBO J 21(9): 2263-2271.
 Woods YL, et al. (2001) Biochem J 355(Pt 3): 597-607.
 Rena G, et al. (2001) Biochem J 354(Pt 3): 605-612.

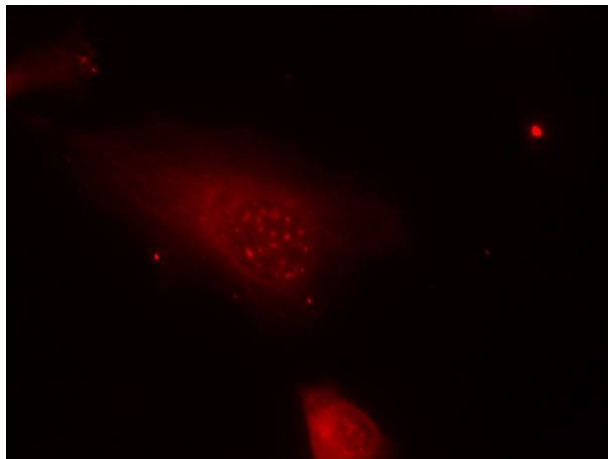


P-Peptide - +

Immunohistochemical analysis of paraffin-embedded human breast carcinoma tissue using FKHR (phospho-Ser319) antibody (#11136).



Western blot analysis of extracts from 293 cells (10% serum-treated, 15min) and HeLa cells (EGF-treated, 200ng/ml, 15min), using FKHR (Ab-319) antibody (#21161, Lane 1, 2 and 3) and FKHR (phospho-Ser319) antibody (#11136, Lane 4 and 5).



Immunofluorescence staining of methanol-fixed HeLa cells using FKHR (phospho- Ser319) antibody (#11136, Red).