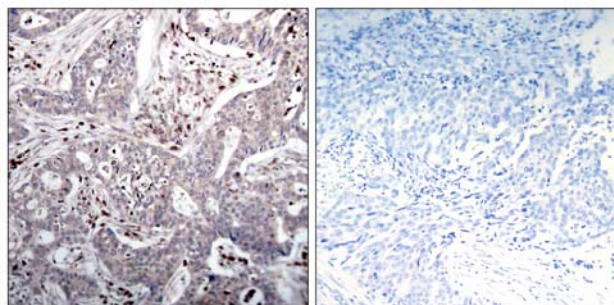


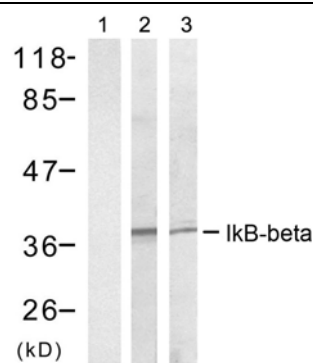
IκB-β (Ab-23) Antibody

- Catalog Number:** 21304 -1, 21304 -2
Amount: 50μg/50μl, 100μg/100μl
Swiss-Prot No. : Q15653
Form of Antibody: Rabbit IgG in phosphate buffered saline (without Mg²⁺ and Ca²⁺), pH 7.4, 150mM NaCl, 0.02% sodium azide and 50% glycerol.
Storage/Stability: Store at -20°C/1 year
Immunogen: The antiserum was produced against synthesized non-phosphopeptide derived from human IκB-β around the phosphorylation site of serine 23 (L-G-S^P-L-G).
Purification: The antibody was affinity-purified from rabbit antiserum by affinity-chromatography using epitope-specific immunogen.
Specificity/Sensitivity: IκB-β (Ab-23) Antibody detects endogenous levels of total IκB-β protein.
Reactivity: Human
Applications: WB: 1:500~1:1000 IHC: 1:50-1:100
References: Shirane, M. et al. (1999) J Biol Chem 274, 28169-28174.
 DiDonato J, et al. (1996) Mol Cell Biol 16(4): 1295-304



Peptide - +

Immunohistochemical analysis of paraffin-embedded human breast carcinoma tissue, using IκB-β (Ab-23) antibody (#21304).



	293	Hela
TNF-α	+	+
Peptide	+	-

Western blot analysis of extract from 293 cells or Hela cells treated with TNF-α (20ng/ml, 5min), using IκB-β (Ab-23) antibody (#21304, Lane 1, 2 and 3).